


"Half-Bridge" IGBT INT-A-PAK (Ultrafast Speed IGBT), 75 A



INT-A-PAK

FEATURES

- Generation 4 IGBT technology
- Ultrafast: Optimized for high speed 8 kHz to 40 kHz in hard switching, > 200 kHz in resonant mode
- Very low conduction and switching losses
- HEXFRED® antiparallel diodes with ultrasoft recovery
- Industry standard package
- UL approved file E78996 
- Compliant to RoHS directive 2002/95/EC
- Designed and qualified for industrial level


**RoHS
COMPLIANT**
PRODUCT SUMMARY

V_{CES}	1200 V
I_C DC	110 A
$V_{CE(on)}$ at 75 A, 25 °C	2.5 V

BENEFITS

- Increased operating efficiency
- Direct mounting to heatsink
- Performance optimized for power conversion: UPS, SMPS, welding
- Lower EMI, requires less snubbing

ABSOLUTE MAXIMUM RATINGS

PARAMETER	SYMBOL	TEST CONDITIONS	MAX.	UNITS
Collector to emitter voltage	V_{CES}		1200	V
Continuous collector current	I_C	$T_C = 25\text{ °C}$	110	A
		$T_C = 76\text{ °C}$	75	
Pulsed collector current	I_{CM}	Repetitive rating; $V_{GE} = 20\text{ V}$, pulse width limited by maximum junction temperature	150	
Peak switching current See fig. 17	I_{LM}		150	
Peak diode forward current	I_{FM}		150	V
Gate to emitter voltage	V_{GE}		± 20	
RMS isolation voltage	V_{ISOL}	Any terminal to case, $t = 1\text{ minute}$	2500	W
Maximum power dissipation	P_D	$T_C = 25\text{ °C}$	390	
		$T_C = 85\text{ °C}$	200	
Operating junction temperature range	T_J		- 40 to + 150	°C
Storage temperature range	T_{Stg}		- 40 to + 125	

Vishay High Power Products "Half-Bridge" IGBT INT-A-PAK
 (Ultrafast Speed IGBT), 75 A

ELECTRICAL SPECIFICATIONS ($T_J = 25\text{ }^\circ\text{C}$ unless otherwise specified)						
PARAMETER	SYMBOL	TEST CONDITIONS	MIN.	TYP.	MAX.	UNITS
Collector to emitter breakdown voltage	$V_{(BR)CES}$	$V_{GE} = 0\text{ V}, I_C = 1\text{ mA}$	1200	-	-	V
Collector to emitter voltage	$V_{CE(on)}$	$V_{GE} = 15\text{ V}, I_C = 75\text{ A}$	-	2.5	3.7	
		$I_C = 75\text{ A}, V_{GE} = 15\text{ V}, T_J = 125\text{ }^\circ\text{C}$	-	2.25	3.3	
Gate threshold voltage	$V_{GE(th)}$	$V_{CE} = 6.0\text{ V}, I_C = 750\text{ }\mu\text{A}$	3.0	4.5	6.0	mV/ $^\circ\text{C}$
Temperature coefficient of threshold voltage	$\Delta V_{GE(th)}/\Delta T_J$		-	-14	-	
Forward transconductance	g_{fe}	$V_{CE} = 25\text{ V}, I_C = 75\text{ A}$ Pulse width 50 μs , single shot	-	107	-	S
Collector to emitter leaking current	I_{CES}	$V_{GE} = 0\text{ V}, V_{CE} = 1200\text{ V}$	-	0.03	1.0	mA
		$V_{GE} = 0\text{ V}, V_{CE} = 1200\text{ V}, T_J = 125\text{ }^\circ\text{C}$	-	4.3	10	
Diode forward voltage	V_F	$V_{GE} = 0\text{ V}, I_F = 75\text{ A}$	-	3	3.6	V
		$I_F = 75\text{ A}, V_{GE} = 0\text{ V}, T_J = 125\text{ }^\circ\text{C}$	-	2.83	3.3	
Gate to emitter leakage current	I_{GES}	$V_{GE} = \pm 20\text{ V}$	-	-	250	nA

SWITCHING CHARACTERISTICS ($T_J = 25\text{ }^\circ\text{C}$ unless otherwise noted)						
PARAMETER	SYMBOL	TEST CONDITIONS	MIN.	TYP.	MAX.	UNITS
Total gate charge (turn-on)	Q_g	$V_{CC} = 400\text{ V}$ $I_C = 85\text{ A}$	-	570	854	nC
Gate to emitter charge (turn-on)	Q_{ge}		-	96	144	
Gate to collector charge (turn-on)	Q_{gc}		-	189	283	
Turn-on delay time	$t_{d(on)}$	$R_{g1} = 15\text{ }\Omega$ $R_{g2} = 0\text{ }\Omega$ $I_C = 75\text{ A}$	-	437	-	ns
Rise time	t_r		-	60	-	
Turn-off delay time	$t_{d(off)}$	$V_{CC} = 720\text{ V}$ $V_{GE} = \pm 15\text{ V}$ Inductor load	-	395	-	
Fall time	t_f		-	245	-	
Turn-on switching energy	E_{on}	$T_J = 25\text{ }^\circ\text{C}$	-	5	-	mJ
Turn-off switching energy	$E_{off}^{(1)}$		-	3	-	
Total switching energy	$E_{ts}^{(1)}$		-	8	-	
Turn-on delay time	$t_{d(on)}$	$R_{g1} = 15\text{ }\Omega$ $R_{g2} = 0\text{ }\Omega$ $I_C = 75\text{ A}$	-	453	-	ns
Rise time	t_r		-	70	-	
Turn-off delay time	$t_{d(off)}$	$V_{CC} = 720\text{ V}$ $V_{GE} = \pm 15\text{ V}$ Inductor load	-	415	-	
Fall time	t_f		-	661	-	
Turn-on switching energy	E_{on}	$T_J = 125\text{ }^\circ\text{C}$	-	8	-	mJ
Turn-off switching energy	$E_{off}^{(1)}$		-	11	-	
Total switching energy	$E_{ts}^{(1)}$		-	19	32	
Input capacitance	C_{ies}	$V_{GE} = 0\text{ V}$	-	12 815	-	pF
Output capacitance	C_{oes}	$V_{CC} = 30\text{ V}$	-	570	-	
Reverse transfer capacitance	C_{res}	$f = 1\text{ MHz}$	-	110	-	
Diode reverse recovery time	t_{rr}	$R_{g1} = 15\text{ }\Omega$ $R_{g2} = 0\text{ }\Omega$ $I_C = 75\text{ A}$	-	174	-	ns
Diode peak reverse current	I_{rr}		-	107	-	A
Diode recovery charge	Q_{rr}	$V_{CC} = 720\text{ V}$ $dI/dt = 1300\text{ A}/\mu\text{s}$	-	9367	-	nC
Diode peak rate of fall of recovery during t_b	$dI_{(rec)M}/dt$		-	1491	-	A/ μs

Note

(1) Repetitive rating; $V_{GE} = 20\text{ V}$, pulse width limited by maximum junction temperature

THERMAL AND MECHANICAL SPECIFICATIONS					
PARAMETER	SYMBOL	TEST CONDITIONS	TYP.	MAX.	UNITS
Thermal resistance, junction to case	IGBT	R_{thJC}	-	0.32	$^\circ\text{C}/\text{W}$
	Diode		-	0.35	
Thermal resistance, case to sink per module	R_{thCS}		0.1	-	
Mounting torque	case to heatsink	For screws M5 x 0.8	-	4.0	Nm
	case to terminal 1, 2 and 3		-	3.0	
Weight of module			200	-	g

"Half-Bridge" IGBT INT-A-PAK Vishay High Power Products (Ultrafast Speed IGBT), 75 A

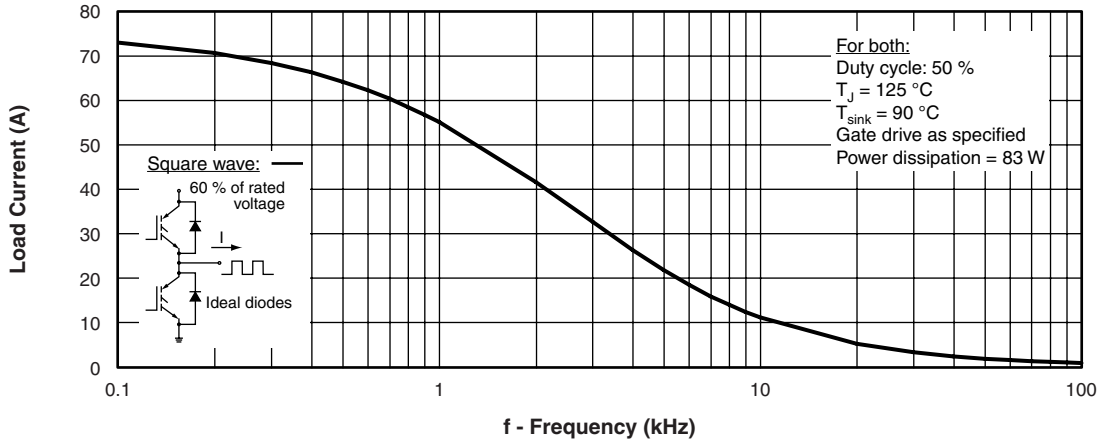


Fig. 1 - Typical Load Current vs. Frequency
(Load Current = I_{RMS} of Fundamental)

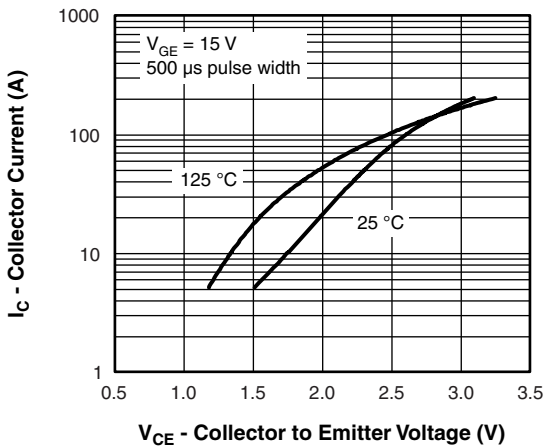


Fig. 2 - Typical Output Characteristics

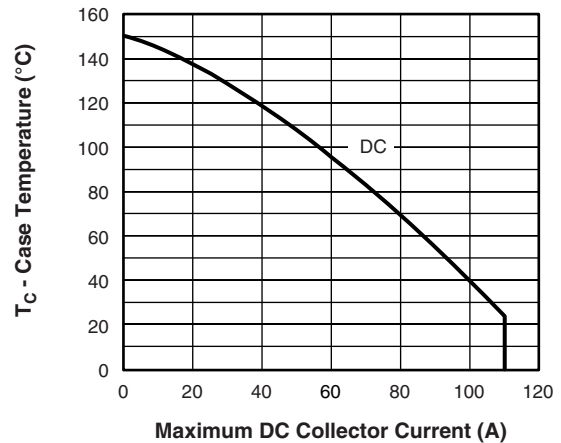


Fig. 4 - Case Temperature vs. Maximum Collector Current

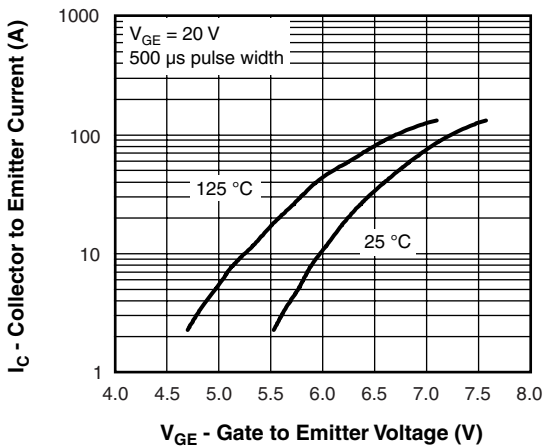


Fig. 3 - Typical Transfer Characteristics

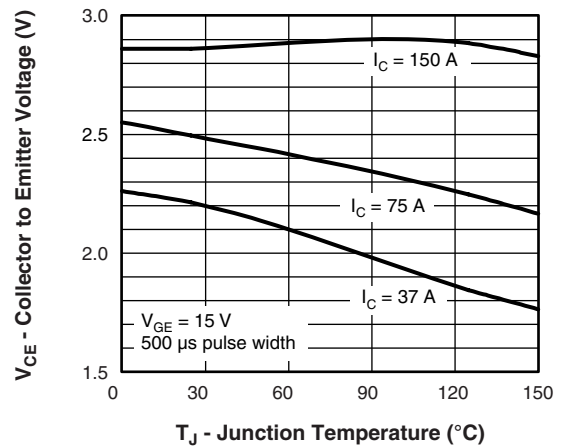


Fig. 5 - Typical Collector to Emitter Voltage vs. Junction Temperature

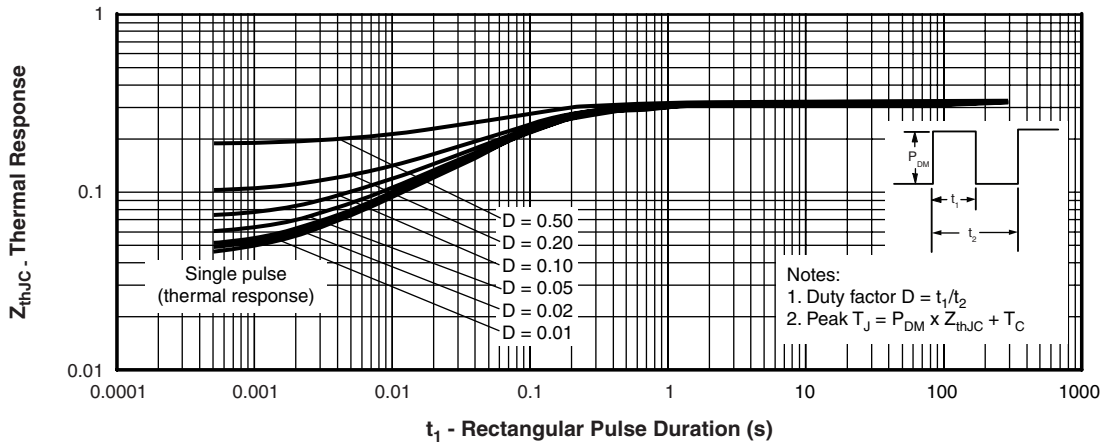


Fig. 6 - Maximum Effective Transient Thermal Impedance, Junction to Case

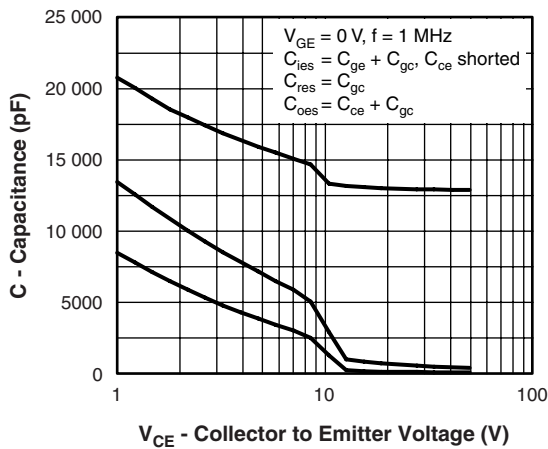


Fig. 7 - Typical Capacitance vs. Collector to Emitter Voltage

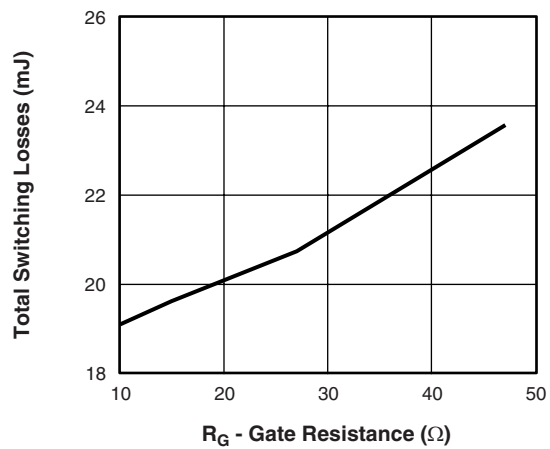


Fig. 9 - Typical Switching Losses vs. Gate Resistance

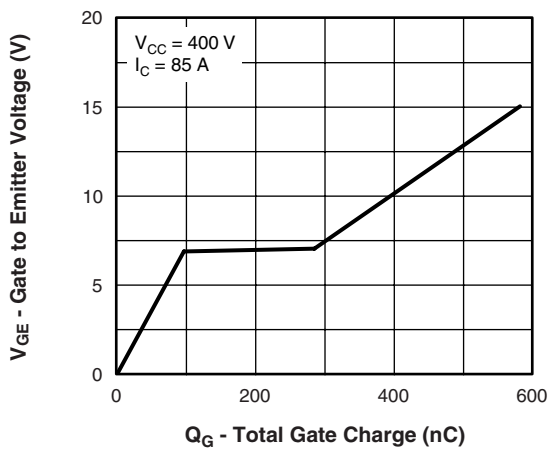


Fig. 8 - Typical Gate Charge vs. Gate to Emitter Voltage

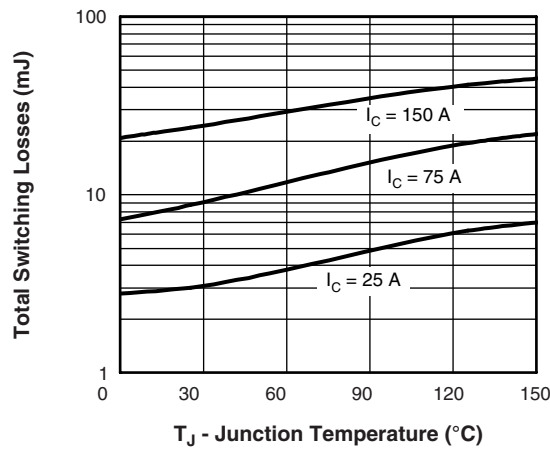


Fig. 10 - Typical Switching Losses vs. Junction Temperature

"Half-Bridge" IGBT INT-A-PAK Vishay High Power Products
(Ultrafast Speed IGBT), 75 A

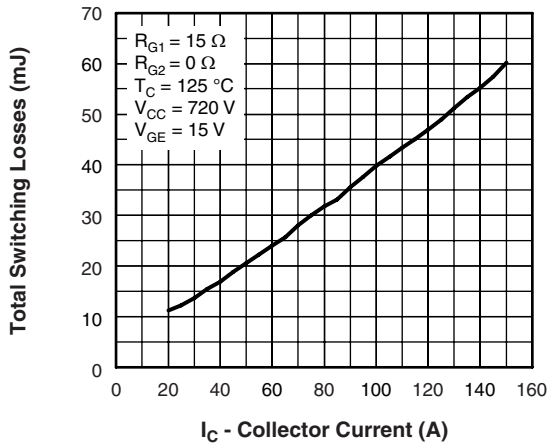


Fig. 11 - Typical Switching Losses vs. Collector to Emitter Current

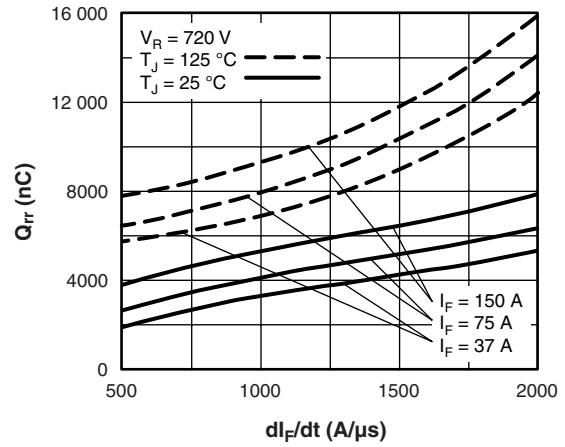


Fig. 14 - Typical Stored Charge vs. di_F/dt

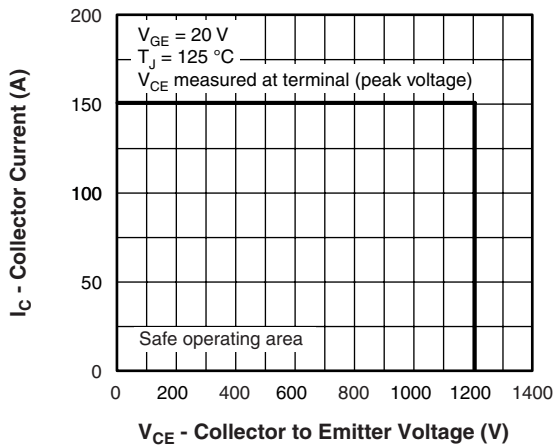


Fig. 12 - Reverse Bias SOA

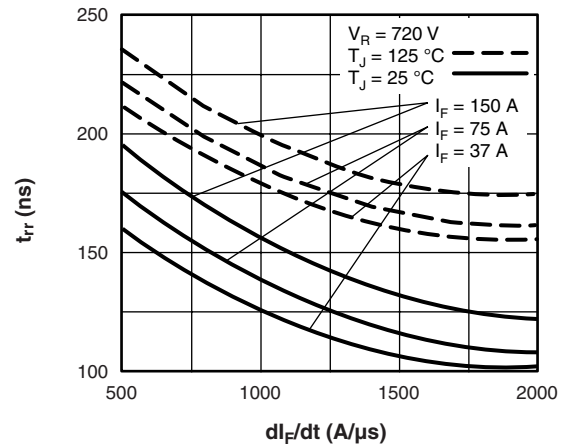


Fig. 15 - Typical Reverse Recovery Time vs. di_F/dt

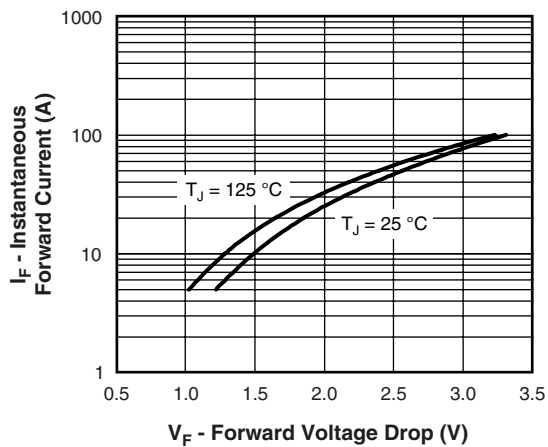


Fig. 13 - Typical Forward Voltage Drop vs. Instantaneous Forward Current

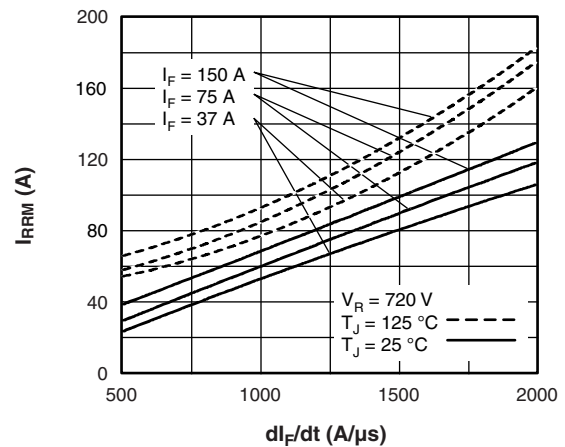


Fig. 16 - Typical Recovery Current vs. di_F/dt

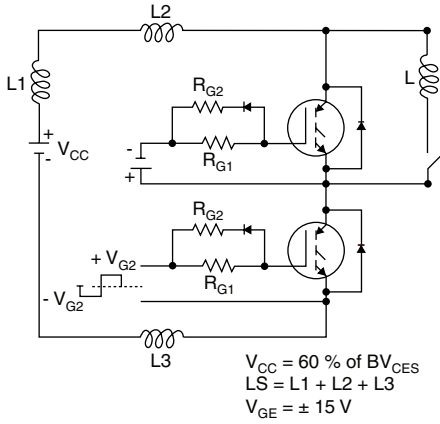


Fig. 17a - Test Circuit for Measurement of I_{LM} , E_{on} , $E_{off}(\text{diode})$, t_{rr} , Q_{rr} , I_{rr} , $t_{d(on)}$, t_r , $t_{d(off)}$, t_f

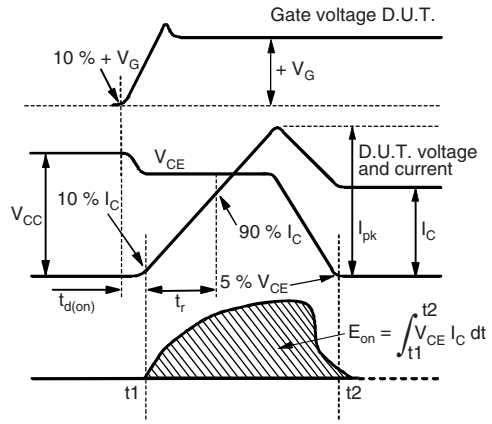


Fig. 17c - Test Waveforms for Circuit of Fig. 18a, Defining E_{on} , $t_{d(on)}$, t_r

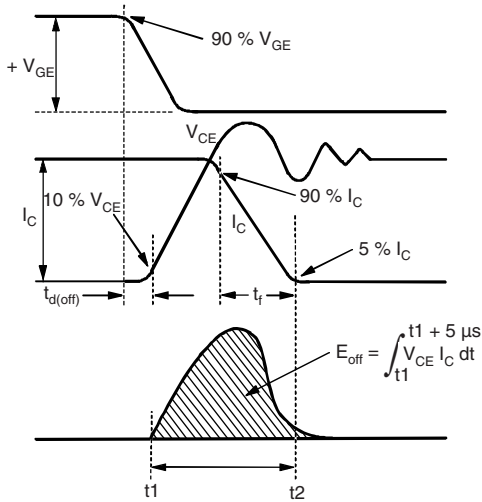


Fig. 17b - Test Waveforms for Circuit of Fig. 18a, Defining E_{off} , $t_{d(off)}$, t_f

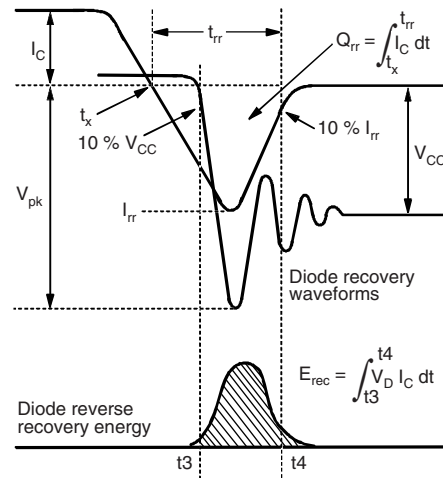


Fig. 17d - Test Waveforms for Circuit of Fig. 18a, Defining E_{rec} , t_{rr} , Q_{rr} , I_{rr}

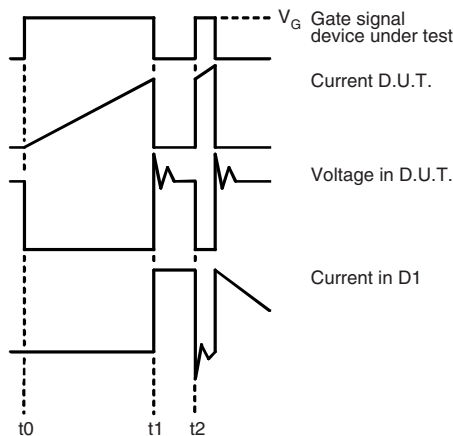
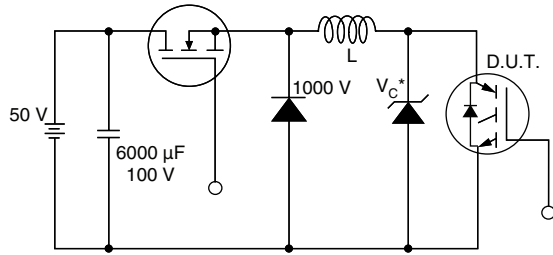


Fig. 17e - Macro Waveforms for Figure 18a's Test Circuit



* Driver same type as D.U.T.; $V_C = 80\%$ of V_{CE} (max)

Note: Due to the 50 V power supply, pulse width and inductor will increase to obtain rated I_d

Fig. 18 - Clamped Inductive Load Test Circuit

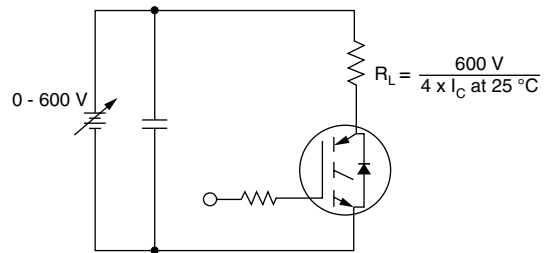


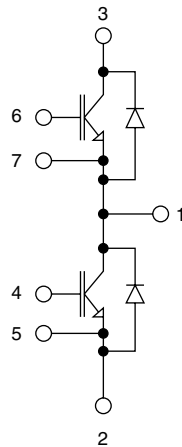
Fig. 19 - Pulsed Collector Current Test Circuit

ORDERING INFORMATION TABLE

Device code	G	A	75	T	S	120	U	PbF
	①	②	③	④	⑤	⑥	⑦	⑧

- 1** - Insulated gate bipolar transistor (IGBT)
- 2** - Generation 4, IGBT silicon, DBC construction
- 3** - Current rating (75 = 75 A)
- 4** - Circuit configuration (T = Half-bridge)
- 5** - Package indicator (INT-A-PAK)
- 6** - Voltage rating (120 = 1200 V)
- 7** - Speed/type (U = Ultrafast)
- 8** - PbF = Lead (Pb)-free

CIRCUIT CONFIGURATION



LINKS TO RELATED DOCUMENTS

Dimensions

www.vishay.com/doc?95173



Disclaimer

All product specifications and data are subject to change without notice.

Vishay Intertechnology, Inc., its affiliates, agents, and employees, and all persons acting on its or their behalf (collectively, "Vishay"), disclaim any and all liability for any errors, inaccuracies or incompleteness contained herein or in any other disclosure relating to any product.

Vishay disclaims any and all liability arising out of the use or application of any product described herein or of any information provided herein to the maximum extent permitted by law. The product specifications do not expand or otherwise modify Vishay's terms and conditions of purchase, including but not limited to the warranty expressed therein, which apply to these products.

No license, express or implied, by estoppel or otherwise, to any intellectual property rights is granted by this document or by any conduct of Vishay.

The products shown herein are not designed for use in medical, life-saving, or life-sustaining applications unless otherwise expressly indicated. Customers using or selling Vishay products not expressly indicated for use in such applications do so entirely at their own risk and agree to fully indemnify Vishay for any damages arising or resulting from such use or sale. Please contact authorized Vishay personnel to obtain written terms and conditions regarding products designed for such applications.

Product names and markings noted herein may be trademarks of their respective owners.